

# CERTIFICATE OF ANALYSIS

**PRODUCT NAME:** CBD Bath Bombs  
**PRODUCT STRENGTH:** 25 mg / each  
**BEST BY DATE:** 9/13/21  
**FILL LOT NUMBER:** 0059A  
**BATH BOMB LOT NUMBER:** 6750  
**HEMP EXTRACT LOT NUMBER:\*** [JP090319B7](#)

**\*Click on the links to view third party results!\***

## Physical Attributes

Test	Method	Specification	Results
Color	SOP-100	White to slightly off-white	PASS
Odor	SOP-100	Lavender	PASS
Appearance	SOP-100	Round, white to slightly off-white bath bombs in shrink wrap	PASS
Primary Package Eval.	SOP-132	Container clean and free of filth. Container caps tight and shrink bag intact	PASS
Secondary Package Eval.	SOP-132	Labeling Compliance Checked, Cartons sturdy and clean. Sufficient cushion material exists. Box taped and secure.	PASS

## Review of Third-Party Analysis

Panel	Method	Specification	Results*	Pass/Fail
<b>Potency - Total CBD</b>	SOP-111	23.75-31.25 mg CBD / ea. LOQ**: 10 PPM† (0.001%)	<a href="#">.1% or 27.5 mg</a>	PASS
<b>Potency - D9-THC</b>	SOP-111	None Detected LOQ: 10 PPM (0.001%)	<a href="#">ND</a>	PASS
<b>FL Compliant Pesticide Panel</b>	SOP-111	Florida State Hemp Program Rule 5B-57.014: Action Limits for Pesticides	<a href="#">ND</a>	PASS
<b>Microbial - Stec E.Coli</b>	SOP-111	Complies with USP 61/62	<a href="#">Below LOQ</a>	PASS
<b>Microbial - Salmonella</b>	SOP-111	Complies with USP 61/62	<a href="#">Below LOQ</a>	PASS
<b>Microbial - Mold</b>	SOP-111	Complies with USP 61/62	<a href="#">Below LOQ</a>	PASS
<b>CA Compliant Heavy Metal Panel</b>	SOP-111	Arsenic (As): ≤1.5 PPM Cadmium (Cd): ≤0.5 PPM Mercury (Hg): ≤1.0 PPM Lead (Pb): ≤0.5 PPM	<a href="#">Below LOQ</a>	PASS
<b>MT Compliant Residual Solvents Panel</b>	SOP-111	Montana Public Health and Human Services Rule 37.107.316	<a href="#">ND</a>	PASS

\* Level of Quantitation, † Parts Per Million

Quality Certified by: *Darcie Moran* 03.24.2020  
 Darcie Moran Date  
 Manager of Quality Assurance



total cannabinoids **0.1%**  
 CBD decarb total .12%  
 Δ9-THC ND

This Product Has Been Tested and Complies with 7USC1639o(1) Definition of Hemp



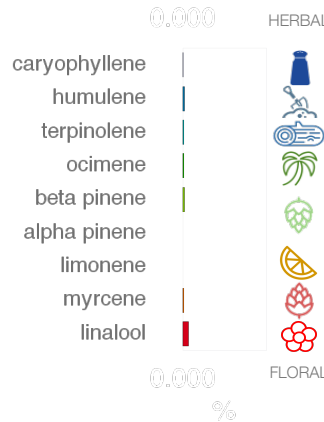
Stillwater Laboratories

https://portal.a2la.org/scopepdf/4961-01.pdf

Sample Handling

test ID sample date 3/5/20 12:15 PM  
 order 6750 labID OCE43 weight 90.7 g  
 source

Methods	method	equipment
weights	MSP-7.3.1.3	AUX120.1
potency	MSP-7.5.1.5	LC-2030
terpenes	MSP-7.5.1.7	QP2020/HS20
pesticides	MSP-7.5.1.8	LC-8060
mycotoxins	MSP-7.5.1.8	LC-8060
microbial	MSP-7.5.1.9	Hardy Diag
solvents	MSP-7.5.1.6	QP2020/HS20
metals	MSP-7.5.1.10	ICPMS2030



topical



Potency	%	estimated error	Terpenes	%	estimated error	%	estimated error	%	estimated error		
tetrahydrocannabinolic acid (THCa)	ND	± 0.02 %	β-myrcene	0.003%	± 0.0017%	camphene	0.000%	± 0.0016 %	guaiol	0.000%	± 0.0016 %
Δ <sup>9</sup> -tetrahydrocannabinol (Δ <sup>9</sup> THC)	ND	± 0.02 %	β-caryophyllene	0.001%	± 0.0017%	Δ <sup>3</sup> -carene	0.003%	± 0.0017 %	β-bisabolol	0.002%	± 0.0017 %
Δ <sup>8</sup> -tetrahydrocannabinol (Δ <sup>8</sup> THC)	ND	± 0.02 %	alpha-pinene	0.000%	± 0.0016%	a-terpinene	0.000%	± 0.0016 %	eucalyptol	0.000%	± 0.0016 %
tetrahydrocannabivarin (THCv)	0%	± 0.02 %	β-pinene	0.006%	± 0.0018%	para-cymene	0.013%	± 0.0020 %			
cannabidiolic acid (CBDA)	ND	± 0.02 %	D-limonene	0.000%	± 0.0016%	g-terpinene	0.011%	± 0.0020 %			
cannabidiol (CBD)	.12%	± 0.04 %	linalool	0.031%	± 0.0025%	(-)-isopulegol	0.000%	± 0.0016 %			total terpenes
cannabidivarin (CBDv)	ND	± 0.02 %	ocimene	0.003%	± 0.0035%	geraniol	0.003%	± 0.0017 %			0.09%
cannabigerolic acid (CBGA)	ND	± 0.02 %	terpinolene	0.005%	± 0.0018%	cis-nerolidol	0.000%	± 0.0016 %			
cannabigerol (CBG)	0%	± 0.02 %	alpha-humulene	0.008%	± 0.0019%	trans-nerolidol	0.000%	± 0.0016 %			
cannabinol (CBN)	ND	± 0.02 %									
cannabichromene (CBC)	0%	± 0.02 %									

Solvents	MT limit	OCE43	LOQ	Pesticides (MT)	MT limit	OCE43	LOQ	Pesticides (other)	OCE43	LOQ
propane	5,000	PASS	<10ppm	abamectin			<10ppb	acephate	0.00 ppm	<10ppb
butanes	5,000	PASS	<10ppm	acequinocyl			<10ppb	acetamidrid	0.00 ppm	<10ppb
pentanes	5,000	PASS	<10ppm	bifenazate			<10ppb	aldicarb	0.00 ppm	<10ppb
hexanes	290	PASS	<10ppm	bifenthrin			<10ppb	azoxystrobin	0.00 ppm	<10ppb
cyclohexane	3,880	PASS	<10ppm	chlormequat cl.			<10ppb	boscalid	0.00 ppm	<10ppb
heptanes	5,000	PASS	<10ppm	cyfluthrin			<80ppb	carbaryl	0.00 ppm	<10ppb
methanol	3,000	PASS	<10ppm	diaminozide			<10ppb	carbofuran	0.00 ppm	<10ppb
isopropanol	5,000	PASS	<10ppm	etoxazole			<10ppb	chloantraniliprole	0.00 ppm	<10ppb
acetone	5,000	PASS	<10ppm	fenoxycarb			<10ppb	chlorpyrifos	0.00 ppm	<10ppb
ethyl acetate	5,000	PASS	<10ppm	imazalil			<10ppb	clofentezine	0.00 ppm	<10ppb
benzene	2	PASS	<0.2ppm	imidacloprid			<10ppb	cypermethrin	0.00 ppm	<10ppb
toluene	890	PASS	<10ppm	myclobutanil			<10ppb	diazinon	0.00 ppm	<10ppb
xylenes	2,170	PASS	<10ppm	paclobutrazol			<10ppb	dichlorvos	0.00 ppm	<10ppb
chloroform	2	PASS	<0.2ppm	pyrethrins			<10ppb	dimethoate	0.00 ppm	<10ppb
dichloromethane	600	PASS	<10ppm	spinosad			<10ppb	etofenprox	0.00 ppm	<10ppb
				spiromesifen			<10ppb	fenpyroximate	0.00 ppm	<10ppb
				spirotetramat			<10ppb	fipronil	0.00 ppm	<10ppb
				trifloxystrobin			<10ppb	flonicamid	0.00 ppm	<10ppb
								fludioxonil	0.00 ppm	<10ppb
								hexythiazox	0.00 ppm	<10ppb
								kresoxym-methyl	0.00 ppm	<10ppb
								malathion	0.00 ppm	<10ppb
								metalaxyl	0.00 ppm	<10ppb
								methiocarb	0.00 ppm	<10ppb
								methomyl	0.00 ppm	<10ppb
								oxamyl	0.00 ppm	<10ppb
								permethrins	0.00 ppm	<10ppb
								phosmet	0.00 ppm	<10ppb
								piperonyl butoxide	0.00 ppm	<10ppb
								prallethrin	0.00 ppm	<10ppb
								propiconazole	0.00 ppm	<10ppb
								pyridaben	0.00 ppm	<10ppb
								spiroxamine	0.00 ppm	<10ppb
								tebuconazole	0.00 ppm	<10ppb
								thiacloprid	0.00 ppm	<10ppb
								thiamethoxam	0.00 ppm	<10ppb

Toxic Metals	MT limit	OCE43	LOQ
arsenic	2 ppm	PASS	<10ppb
cadmium	4.1 ppm	PASS	<10ppb
lead	1.2 ppm	PASS	<10ppb
mercury	0.4 ppm	PASS	<10ppb

Microbial	MT limit	OCE43	LOQ
<i>E. coli</i>	10 CFU	PASS	<10 CFU/g
<i>Salmonella</i> sp.	10 CFU	PASS	<10 CFU/g
molds	10000 CFU	PASS	<10k CFU/g
Aflatoxin B1,B2,G1,G2	20 ppb	PASS	<20 ppb
Ochratoxin A	20 ppb	PASS	<20 ppb

• All testing was completed onsite at 6073 US93N, Olney MT •• Potency (cannabinoid concentration) is calculated from the equation: [cannabinoid] = [cannabinoid]<sub>HPLC</sub> x volume<sub>dilution</sub> / m<sub>dry</sub>. Terpene concentration is calculated from the equation: [terpene] = (terpene mass)<sub>GCMS</sub> / m<sub>dry</sub>. ••• Decarboxyted cannabinoid concentration is calculated from the equation XXX<sub>total</sub> = 0.877 x XXX<sub>a</sub> + XXX ••• Standards are used to calibrate the resulting data and estimate error using a standard estimate of error method; this is combined with error from weighing and dilution using the propagation of error formula s<sub>g</sub><sup>2</sup> = Σ(∂f/∂i)<sup>2</sup>s<sub>i</sub><sup>2</sup> where i is the contributor to error. The 95% confidence range is calculated from the equation: (concentration) ± t<sub>CL90</sub> x s<sub>g</sub>. Sampling error is not

Certified by:

Kyle Larson, MSc (Biology)  
 Deputy Director  
 6073 US93N, Olney MT 59927  
 406-881-2019 rdb@stwlabs.com



This is an amended version of report# 19-012757/D02.R00.  
Reason: Updated report formatting.

**Product identity:** JP090319B7  
**Laboratory ID:** 19-012757-0002

**Client/Metric ID:** .  
**Sample Date:**

**Summary**

**Potency:**

Analyte	Result (%)	Pie Chart		
CBD	81.9		<ul style="list-style-type: none"> <li><span style="color: red;">●</span> CBD</li> <li><span style="color: blue;">●</span> CBDV</li> </ul>	CBD-Total 81.9%
CBDV†	1.86			THC-Total < 0.177%
(Reported in percent of total sample)				

**Residual Solvents:**

All analytes passing and less than LOQ.

**Pesticides:**

All analytes passing and less than LOQ.

**Terpenes:**

Analyte	Percent by weight	Percent of Total	Analyte	Percent by weight	Percent of Total
(-)-Guaiol†	0.619	35.17%	(-)-caryophyllene oxide†	0.511	29.03%
β-Caryophyllene†	0.450	25.57%	Humulene†	0.0795	4.52%
Linalool†	0.0594	3.38%	(-)-a-Terpineol†	0.0411	2.34%
<b>Total Terpenes†</b>	<b>1.76</b>	<b>100.00%</b>			

**Metals:**

Less than LOQ for all analytes.

**Microbiology:**

Less than LOQ for all analytes.



**Customer:** My CBD Test

**Product identity:** JP090319B7

**Client/Metric ID:** .

**Sample Date:**

**Laboratory ID:** 19-012757-0002

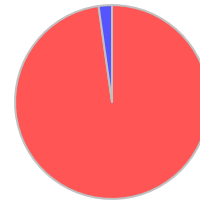
**Relinquished by:** UPS

**Temp:** 23.4 °C

### Sample Results

Potency Method J AOAC 2015 V98-6 Units % Batch 1909717 Analyze 10/22/19 05:04 PM

Analyte	As Received	Dry weight	LOQ	Notes
CBC†	< LOQ		0.0943	
CBC-A†	< LOQ		0.0943	
CBC-Total†	< LOQ		0.177	
CBD	81.9		0.943	
CBD-A	< LOQ		0.0943	
CBD-Total	81.9		1.03	
CBDV†	1.86		0.0943	
CBDV-A†	< LOQ		0.0943	
CBDV-Total†	1.86		0.176	
CBG†	< LOQ		0.0943	
CBG-A†	< LOQ		0.0943	
CBG-Total†	< LOQ		0.176	
CBL†	< LOQ		0.0943	
CBN	< LOQ		0.0943	
Δ8-THC†	< LOQ		0.0943	
Δ9-THC	< LOQ		0.0943	
THC-A	< LOQ		0.0943	
THC-Total	< LOQ		0.177	
THCV†	< LOQ		0.0943	
THCV-A†	< LOQ		0.0943	
THCV-Total†	< LOQ		0.176	



● CBD  
● CBDV

### Microbiology

Analyte	Result	Limits	Units	LOQ	Batch	Analyze	Method	Notes
E.coli	< LOQ		cfu/g	10	1909486	10/21/19	AOAC 991.14 (Petrifilm)	X
Total Coliforms	< LOQ		cfu/g	10	1909486	10/21/19	AOAC 991.14 (Petrifilm)	X
Mold (RAPID Petrifilm)	< LOQ		cfu/g	10	1909487	10/21/19	AOAC 2014.05 (RAPID)	X
Yeast (RAPID Petrifilm)	< LOQ		cfu/g	10	1909487	10/21/19	AOAC 2014.05 (RAPID)	X



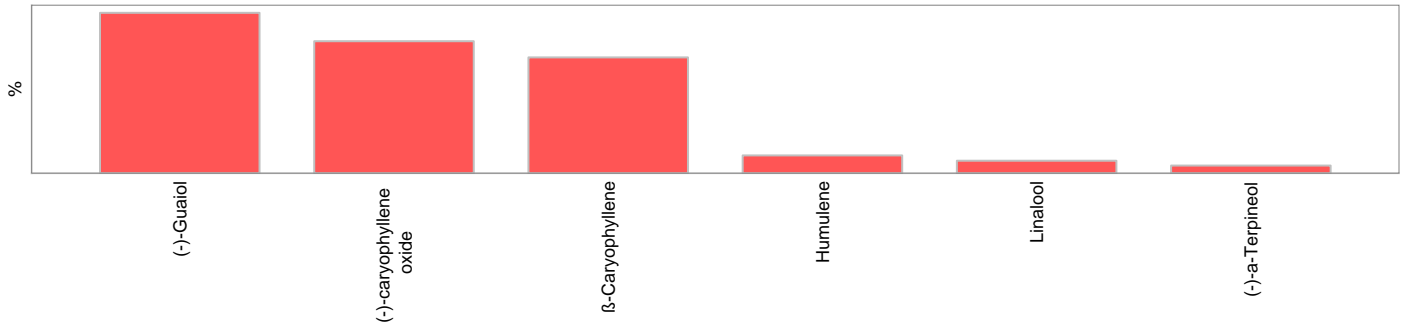
Solvents					Method EPA5021A	Units µg/g	Batch 1909460	Analyze 10/23/19 02:28 PM			
Analyte	Result	Limits	LOQ	Status	Notes	Analyte	Result	Limits	LOQ	Status	Notes
1,4-Dioxane	< LOQ	380	100	pass		2-Butanol	< LOQ	5000	200	pass	
2-Ethoxyethanol	< LOQ	160	30.0	pass		2-Methylbutane	< LOQ		200		
2-Methylpentane	< LOQ		30.0			2-Propanol (IPA)	< LOQ	5000	200	pass	
2,2-Dimethylbutane	< LOQ		30.0			2,2-Dimethylpropane	< LOQ		200		
2,3-Dimethylbutane	< LOQ		30.0			3-Methylpentane	< LOQ		30.0		
Acetone	< LOQ	5000	200	pass		Acetonitrile	< LOQ	410	100	pass	
Benzene	< LOQ	2.00	1.00	pass		Butanes (sum)	< LOQ	5000	400	pass	
Cyclohexane	< LOQ	3880	200	pass		Ethyl acetate	< LOQ	5000	200	pass	
Ethyl benzene	< LOQ		200			Ethyl ether	< LOQ	5000	200	pass	
Ethylene glycol	< LOQ	620	200	pass		Ethylene oxide	< LOQ	50.0	30.0	pass	
Hexanes (sum)	< LOQ	290	150	pass		Isopropyl acetate	< LOQ	5000	200	pass	
Isopropylbenzene	< LOQ	70.0	30.0	pass		m,p-Xylene	< LOQ		200		
Methanol	< LOQ	3000	200	pass		Methylene chloride	< LOQ	600	200	pass	
Methylpropane	< LOQ		200			n-Butane	< LOQ		200		
n-Heptane	< LOQ	5000	200	pass		n-Hexane	< LOQ		30.0		
n-Pentane	< LOQ		200			o-Xylene	< LOQ		200		
Pentanes (sum)	< LOQ	5000	600	pass		Propane	< LOQ	5000	200	pass	
Tetrahydrofuran	< LOQ	720	100	pass		Toluene	< LOQ	890	100	pass	
Total Xylenes	< LOQ		400			Total Xylenes and Ethyl	< LOQ	2170	600	pass	

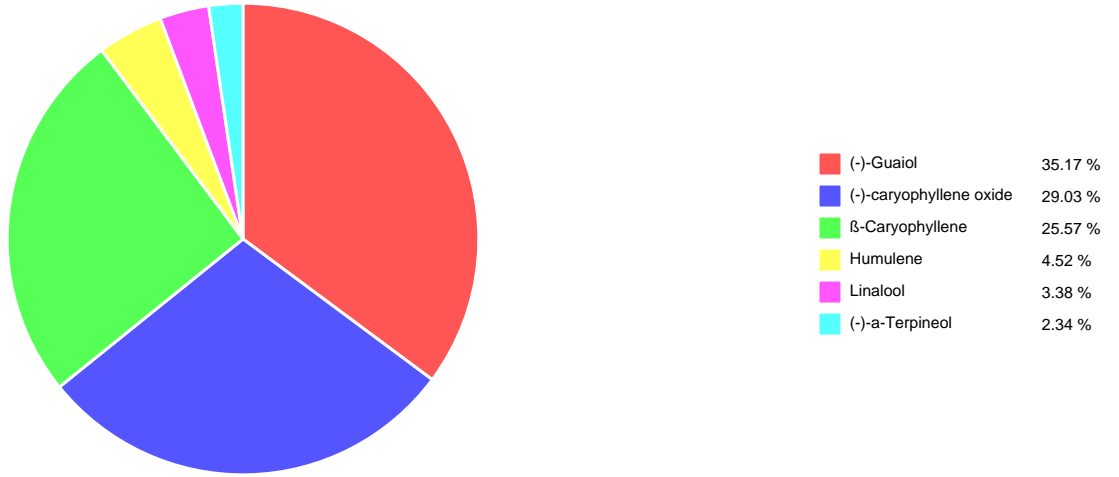


Pesticides											
Method AOAC 2007.01 & EN 15662 (mod) Units mg/kg Batch 1909507 Analyze 10/21/19 09:49 AM											
Analyte	Result	Limits	LOQ	Status	Notes	Analyte	Result	Limits	LOQ	Status	Notes
Abamectin	< LOQ	0.50	0.250	pass		Acephate	< LOQ	0.40	0.250	pass	
Acequinocyl	< LOQ	2.0	1.00	pass		Acetamiprid	< LOQ	0.20	0.100	pass	
Aldicarb	< LOQ	0.40	0.200	pass		Azoxystrobin	< LOQ	0.20	0.100	pass	
Bifenazate	< LOQ	0.20	0.100	pass		Bifenthrin	< LOQ	0.20	0.100	pass	
Boscalid	< LOQ	0.40	0.200	pass		Carbaryl	< LOQ	0.20	0.100	pass	
Carbofuran	< LOQ	0.20	0.100	pass		Chlorantraniliprole	< LOQ	0.20	0.100	pass	
Chlorfenapyr	< LOQ	1.0	0.500	pass		Chlorpyrifos	< LOQ	0.20	0.100	pass	
Clofentezine	< LOQ	0.20	0.100	pass		Cyfluthrin	< LOQ	1.0	0.500	pass	
Cypermethrin	< LOQ	1.0	0.500	pass		Daminozide	< LOQ	1.0	0.500	pass	
Diazinon	< LOQ	0.20	0.100	pass		Dichlorvos	< LOQ	1.0	0.500	pass	
Dimethoate	< LOQ	0.20	0.100	pass		Ethoprophos	< LOQ	0.20	0.100	pass	
Etofenprox	< LOQ	0.40	0.200	pass		Etoazole	< LOQ	0.20	0.100	pass	
Fenoxycarb	< LOQ	0.20	0.100	pass		Fenpyroximate	< LOQ	0.40	0.200	pass	
Fipronil	< LOQ	0.40	0.200	pass		Fonicamid	< LOQ	1.0	0.400	pass	
Fludioxonil	< LOQ	0.40	0.200	pass		Hexythiazox	< LOQ	1.0	0.400	pass	
Imazalil	< LOQ	0.20	0.100	pass		Imidacloprid	< LOQ	0.40	0.200	pass	
Kresoxim-methyl	< LOQ	0.40	0.200	pass		Malathion	< LOQ	0.20	0.100	pass	
Metalaxyl	< LOQ	0.20	0.100	pass		Methiocarb	< LOQ	0.20	0.100	pass	
Methomyl	< LOQ	0.40	0.200	pass		MGK-264	< LOQ	0.20	0.100	pass	
Myclobutanil	< LOQ	0.20	0.100	pass		Naled	< LOQ	0.50	0.250	pass	
Oxamyl	< LOQ	1.0	0.500	pass		Paclbutrazole	< LOQ	0.40	0.200	pass	
Parathion-Methyl	< LOQ	0.20	0.200	pass		Permethrin	< LOQ	0.20	0.100	pass	
Phosmet	< LOQ	0.20	0.100	pass		Piperonyl butoxide	< LOQ	2.0	1.00	pass	
Prallethrin	< LOQ	0.20	0.200	pass		Propiconazole	< LOQ	0.40	0.200	pass	
Propoxur	< LOQ	0.20	0.100	pass		Pyrethrin I (total)	< LOQ	1.0	0.500	pass	
Pyridaben	< LOQ	0.20	0.100	pass		Spinosad	< LOQ	0.20	0.100	pass	
Spiromesifen	< LOQ	0.20	0.100	pass		Spirotetramat	< LOQ	0.20	0.100	pass	
Spiroxamine	< LOQ	0.40	0.200	pass		Tebuconazole	< LOQ	0.40	0.200	pass	
Thiacloprid	< LOQ	0.20	0.100	pass		Thiamethoxam	< LOQ	0.20	0.100	pass	
Trifloxystrobin	< LOQ	0.20	0.100	pass							



Terpenes				Method J AOAC 2015 V98-6	Units %	Batch 1909461	Analyze 10/18/19 12:07 PM		
Analyte	Result	LOQ	% of Total	Notes	Analyte	Result	LOQ	% of Total	Notes
(-)-Guaial <sup>†</sup>	0.619	0.020	35.17%		(-)-caryophyllene oxide <sup>†</sup>	0.511	0.020	29.03%	
β-Caryophyllene <sup>†</sup>	0.450	0.020	25.57%		Humulene <sup>†</sup>	0.0795	0.020	4.52%	
Linalool <sup>†</sup>	0.0594	0.020	3.38%		(-)-a-Terpeneol <sup>†</sup>	0.0411	0.020	2.34%	
(-)-Isopulegol <sup>†</sup>	< LOQ	0.020	0.00%		(-)-β-Pinene <sup>†</sup>	< LOQ	0.020	0.00%	
(+)-Borneol <sup>†</sup>	< LOQ	0.020	0.00%		(+)-Cedrol <sup>†</sup>	< LOQ	0.020	0.00%	
(+)-fenchol <sup>†</sup>	< LOQ	0.020	0.00%		(+)-Pulegone <sup>†</sup>	< LOQ	0.020	0.00%	
(±)-Camphor <sup>†</sup>	< LOQ	0.020	0.00%		(±)-cis-Nerolidol <sup>†</sup>	< LOQ	0.020	0.00%	
(±)-fenchone <sup>†</sup>	< LOQ	0.020	0.00%		(±)-trans-Nerolidol <sup>†</sup>	< LOQ	0.020	0.00%	
(R)-(+)-Limonene <sup>†</sup>	< LOQ	0.020	0.00%		a-Bisabolol <sup>†</sup>	< LOQ	0.020	0.00%	
a-cedrene <sup>†</sup>	< LOQ	0.020	0.00%		a-phellandrene <sup>†</sup>	< LOQ	0.020	0.00%	
a-pinene <sup>†</sup>	< LOQ	0.020	0.00%		a-Terpinene <sup>†</sup>	< LOQ	0.020	0.00%	
Camphene <sup>†</sup>	< LOQ	0.020	0.00%		cis-β-Ocimene <sup>†</sup>	< LOQ	0.006	0.00%	
d-3-Carene <sup>†</sup>	< LOQ	0.020	0.00%		Eucalyptol <sup>†</sup>	< LOQ	0.020	0.00%	
farnesene <sup>†</sup>	< LOQ	0.020	0.00%		gamma-Terpinene <sup>†</sup>	< LOQ	0.020	0.00%	
Geraniol <sup>†</sup>	< LOQ	0.020	0.00%		Geranyl acetate <sup>†</sup>	< LOQ	0.020	0.00%	
Isoborneol <sup>†</sup>	< LOQ	0.020	0.00%		Menthol <sup>†</sup>	< LOQ	0.020	0.00%	
nerol <sup>†</sup>	< LOQ	0.020	0.00%		p-Cymene <sup>†</sup>	< LOQ	0.020	0.00%	
Sabinene <sup>†</sup>	< LOQ	0.020	0.00%		Sabinene hydrate <sup>†</sup>	< LOQ	0.020	0.00%	
β-Myrcene <sup>†</sup>	< LOQ	0.020	0.00%		Terpinolene <sup>†</sup>	< LOQ	0.020	0.00%	
trans-β-Ocimene <sup>†</sup>	< LOQ	0.013	0.00%		valencene <sup>†</sup>	< LOQ	0.020	0.00%	
<b>Total Terpenes</b>	<b>1.76</b>								





**Metals**

Analyte	Result	Limits	Units	LOQ	Batch	Analyze	Method	Notes
Arsenic	< LOQ		mg/kg	0.100	1909726	10/25/19	AOAC 2013.06 (mod.)	X
Cadmium	< LOQ		mg/kg	0.100	1909726	10/25/19	AOAC 2013.06 (mod.)	X
Lead	< LOQ		mg/kg	0.100	1909726	10/25/19	AOAC 2013.06 (mod.)	X
Mercury	< LOQ		mg/kg	0.100	1909726	10/25/19	AOAC 2013.06 (mod.)	X





These test results are representative of the individual sample selected and submitted by the client.

**Abbreviations**

**Limits:** Action Levels per OAR-333-007-0400, OAR-333-007-0210, OAR-333-007-0220

**Limit(s) of Quantitation (LOQ):** The minimum levels, concentrations, or quantities of a target variable (e.g., target analyte) that can be reported with a specified degree of confidence.

† = Analyte not NELAP accredited.

**Units of Measure**

cfu/g = Colony forming units per gram

µg/g = Microgram per gram

mg/kg = Milligram per kilogram = parts per million (ppm)

% = Percentage of sample

% wt = µg/g divided by 10,000

**Glossary of Qualifiers**

X: Not ORELAP accredited.

Approved Signatory

Derrick Tanner  
General Manager