

# CERTIFICATE OF ANALYSIS

**PRODUCT NAME:** Certified Organic CBD Tincture - Orange  
**PRODUCT STRENGTH:** 450 mg  
**FILL LOT NUMBER:** B10119-001  
**TINCTURE BATCH** 21105A  
**BEST BY DATE:** 10/15/2022  
**HEMP EXTRACT LOT\*:** NA

\*Click on the links to view third-party reports\*

### Physical Attributes

Test	Method	Specification	Results
Color	SOP-100	Golden to Amber	PASS
Odor	SOP-100	Coconut and hemp, orange	PASS
Appearance	SOP-100	Golden to Amber oil in brown glass bottle with dropper	PASS
Primary Package Eval.	SOP-132	Container clean and free of filth. Container caps tight and shrink bands intact	PASS
Secondary Package Eval.	SOP-132	Labeling Compliance Checked, Cartons sturdy and clean. Sufficient cushion material exists. Box taped and secure.	PASS

### Review of Third-Party Analysis

Panel	Method	Specification	Results*	Pass/Fail
<b>Potency - Total CBD</b>	SOP-111	450-562.5 mg CBD LOQ**: 10 PPM† (0.001%)	<b>471.3 mg</b>	PASS
<b>Potency - D9-THC</b>	SOP-111	None Detected LOQ: 10 PPM (0.001%)	<b>ND</b>	PASS
<b>Compliant Pesticide Panel</b>	SOP-111	WIP-100008 : Product specification for Tinctures, Oregon Action limits apply	<b>ND</b>	PASS
<b>Microbial - Stec E.Coli</b>	SOP-111	Complies with USP 61/62	<b>Below LOQ</b>	PASS
<b>Microbial - Salmonella</b>	SOP-111	Complies with USP 61/62	<b>Below LOQ</b>	PASS
<b>Microbial - Yeast and Mold</b>	SOP-111	Complies with USP 61/62	<b>Below LOQ</b>	PASS
<b>CA Compliant Heavy Metal Panel</b>	SOP-111	Arsenic (As): ≤1.5 PPM Cadmium (Cd): ≤0.5 PPM Mercury (Hg): ≤1.0 PPM Lead (Pb): ≤0.5 PPM	<b>ND</b>	PASS

\*\*Level of Quantitation, † Parts Per Million

Quality Certified Kei Horikawa 04/23/2021  
 Kei Horikawa Date  
 Quality Control Manager



B1019-001

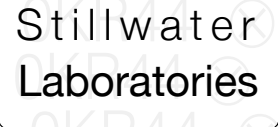
7USC1639 Certificate of Analysis

sample ID 24999

certificate ID OKR44

total cannabinoids 484.4mg per 30 mL
THC‡ ND CBD‡ 471.3mg terpenes

This Product Has Been Tested and Complies with 7USC1639o(1)



order 8689
analysis date 10/22/2020 12:01:11 PM
test tag
sample wgt

0.000 infused

Inspection MSP-7.5.1.2

DESCRIPTION: Oil sample received in a client-labeled bottle, by commercial courier. Labeled 24999.

- caryophyllene
humulene
terpinolene
ocimene
beta pinene
alpha pinene
limonene
myrcene
linalool

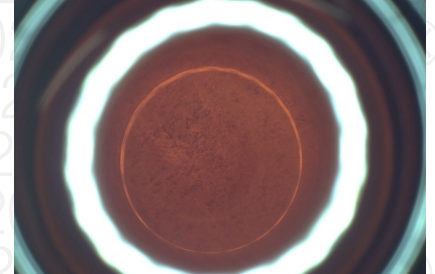


Table with columns: Potency per 30 mL, LOD, LOQ, error (95%CI k=2), Terpenes. Lists various cannabinoids and terpenes with their respective values and limits.

‡ = decarbed NT = not tested NL = no limit, ND = not detected, LOD = detection limit, LOQ = quantitation limit

Table with columns: Microbial, Solvents, Metals, Pesticides. Lists various contaminants and their test results (PASS, limit values).

INSTRUMENTS
potency: HPLC (LC2030C-UV)
terpenes: GCMS (QP2020/HS20)
solvents: GCMS (QP2020/HS20)
pesticides: LCMSMS (LC8060)
mycotoxins: LCMSMS (LC8060)
microbial: qPCR (AriaMx) and plating
metals: ICPMS (ICPMS-2030)

SECURITY FEATURE: WATERMARK MUST MATCH CERTIFICATE ID AND ISSUE DATE

Certified by: Justin M Johnston, Deputy Director

Stillwater Laboratories Inc.
MT License L00001, 7, 8
6073 US93N Suite 5
Olney MT 59927
406-881-2019

The data in this report is the property of and is administered by Stillwater Labs. The format, layout, and security features of this report are copyrighted by Stillwater Laboratories Inc. © 2020



certificate ID  
**1DR36**

**OT0450-21105A**

# 7USC1639 Certificate of Analysis



rec'd 4/20/2021 12:25:02 PM

order 10519

per

This Product Has Been Tested and Complies with 7USC1639o(1)

Stillwater Laboratories



per

### Microbial

	MSP-7.5.1.10	limit	LOD	LOQ	error	result
E.coli	ND	0CFU	0.010.11	±0.1CFU		PASS
Salmonella sp.	ND	0CFU	0.010.11	±0.1CFU		PASS
molds	ND	10000CFU	1.915.61	±5.6CFU		PASS

SECURITY FEATURE: WATERMARK MUST MATCH CERTIFICATE ID AND ISSUE DATE

Certified by:

Kyle Larson, MSc  
Deputy Director

Jacob Harris  
QA Manager



ISO/IEC 17025:2017



Certificate #4961.01

<https://portal.a2la.org/scopepdf/4961-01.pdf>

**Stillwater Laboratories Inc.**  
MT License L0001, L00007  
6073 US93N Suite 5, Olney MT 59927  
406-881-2019

INSTRUMENTS: Potency by HPLC (LC2030C-JV), solvents and terpenes by GCMS (QP2020/HS20), pesticides and mycotoxins by LCMSMS (LC8060), microbial by qPCR (AriaMx) and plating (Hardy Diagnostics), metals by ICPMS (ICPMS-2030)

• All testing was completed onsite at 6073 US93N, Olney MT • Potency (cannabinoid concentration) is calculated as:  $[\text{cannabinoid}] = [\text{cannabinoid}]_{\text{HPLC}} \times \text{volume}_{\text{dilution}} / \text{M}_{\text{dry}}$  ••• Decarboxyated cannabinoid concentration is calculated  $\text{XXX}_{\text{total}} = 0.877 \times \text{XXXa} + \text{XXX}$  ••• Standards are used to calibrate the resulting data and estimate error using a standard estimate of error method; LOD is the limit of detection (3.3s), LOQ is the limit of quantification (3xLOD), and experimental error is calculated from weighing, dilution, and interpolation error using the formula  $s_{\text{e}}^2 = \sum (\partial f / \partial i)^2 s_{\text{i}}^2$  where i is the contributor to error. The 95% confidence range is calculated from:  $(\text{concentration}) \pm t_{\text{CL},90} \times s_{\text{e}}$ . Sampling error is not considered in error calculations. ND = not detected (< LOD), NT = not tested, NL = no limit, NA = not applicable. ‡ = decarbed

Printed 4/22/2021 2:06 PM