

# CERTIFICATE OF ANALYSIS

**PRODUCT NAME:** Certified Organic CBD Tincture - Lemon  
**PRODUCT STRENGTH:** 900 mg / bottle  
**TINCTURE BATCH:** 21231A  
**BEST BY DATE:** 02/19/2023  
**HEMP EXTRACT LOT:** CO218-003

\*Click on the links to view third-party reports\*

### Physical Attributes

Test	Method	Specification	Results
Color	Joy Internal	Golden to Amber	PASS
Odor	Joy Internal	Characteristic - Coconut and Hemp, Lemon	PASS
Appearance	Joy Internal	Golden to Amber oil in brown glass bottle with dropper.	PASS
Primary Package Eval.	Joy Internal	Container clean and free of filth. Container caps tight and shrink bands intact	PASS
Secondary Package Eval.	Joy Internal	Labeling Compliance Checked, Cartons sturdy and clean. Sufficient cushion material exists. Box taped and secure.	PASS

### Review of Third-Party Analysis

Panel	Method	Specification	Results*	Pass/Fail
<b>Potency - Total CBD</b>	HPLC-UV DAD	*NLT (product strength) mg / bottle	<b>975.6 mg</b>	PASS
<b>Potency - D9-THC</b>	HPLC-UV DAD	LOQ: <0.01% THC (Broad Spectrum)	<b>ND</b>	PASS
<b>Expanded Pesticide Panel</b>	HPLC-QQQ	LOQ: Complies with CDPHE 6 CCR 1010-21 Industrial Hemp Extract	<b>ND</b>	PASS
<b>Microbial</b> Escherichia coli (STEC)	PCR	Complies with CDPHE 6 CCR 1010-21 - LOQ 1 CFU/25 gram	<b>Absent</b>	PASS
<b>Microbial</b> Salmonella	PCR	Complies with CDPHE 6 CCR 1010-21 - LOQ 1 CFU/25 gram	<b>Absent</b>	PASS
<b>Microbial</b> Yeast and Mold	Culture Plating	Complies with CDPHE 6 CCR 1010-21 - LOQ 10 <sup>2</sup> CFU/gram	<b>Below LOQ</b>	PASS
<b>Microbial</b> Total Coliforms*	Culture Plating	Complies with CDPHE 6 CCR 1010-21 - LOQ 10 <sup>2</sup> CFU/gram	<b>Below LOQ</b>	PASS
<b>Microbial</b> Total Aerobic Count*	Culture Plating	Complies with CDPHE 6 CCR 1010-21 - LOQ 10 <sup>3</sup> CFU/gram	<b>Below LOQ</b>	PASS
<b>Heavy Metals Panel</b>	ICP-MS	Arsenic (As): ≤1.5 ppm Cadmium (Cd): ≤0.5 ppm Lead (Pb): ≤0.5 ppm Mercury (Hg): ≤1.5 ppm	<b>ND</b>	PASS
<b>Mycotoxins</b>	ICP-MS	Total Aflatoxins <20 ppb† Aflatoxin B1 < 5 ppb Ochratoxin < 5ppb	<b>ND</b>	PASS
<b>Residual Solvents</b>	GC-HS-MSD	LOQ: Complies with CDPHE 6 CCR 1010-21 Industrial Hemp Extract	<b>ND</b>	PASS

\*Level of Quantitation, † Parts Per Million ‡ Part Per Billion  
 CFU/g=Colony Forming Units per Gram  
 \*Nothing Less Than  
 10<sup>2</sup>=100 CFU  
 10<sup>3</sup>=1,000 CFU

Quality Certified Kayla Kolber 08/27/2021  
 Kayla Kolber Date  
 Quality Assurance Technician



C0218-003

7USC1639 Certificate of Analysis

man. date 2/22/2021

total cannabinoids 1025.9mg per 30 mL

This Product Has Been Tested and Complies with 7USC1639o(1)

Stillwater Laboratories

certificate ID 1BS27

THC total ND CBD total 975.6mg terpenes

order 9903

0.000

MIP

analysis date 2/22/2021 5:32:07 PM

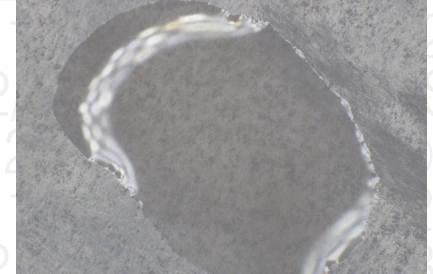
test tag S1BWM

sample wgt

Inspection MSP-7.5.1.2

DESCRIPTION: Concentrate sample received in a client-labeled bottle, collected at dispensary/grow. 1 and sample tag S1BWM.

- caryophyllene
humulene
terpinolene
ocimene
beta pinene
alpha pinene
limonene
myrcene
linalool



0.000

Potency per 30 mL

MSP-7.5.1.4 LOD LOQ error (95%CI k=2)

Terpenes

MSP-7.5.1.6

MSP-7.5.1.6

Table with 4 columns: Compound, Result, LOD, LOQ, Error. Rows include tetrahydrocannabinolic acid (THCa), delta-9-tetrahydrocannabinol, delta-8-tetrahydrocannabinol, tetrahydrocannabivarin, cannabidiolic acid, cannabidiol, cannabidivarin, cannabigerolic acid, cannabigerol, cannabinal, and cannabichromene.

‡ = decarbed NT = not tested NL = no limit, ND = not detected, LOD = detection limit, LOQ = quantitation limit

Microbial

MSP-7.5.1.10

limit

Metals

MSP-7.5.1.11

limit

Pesticides

MSP-7.5.1.8

limit

Pesticides

MSP-7.5.1.8

limit

Large table with 4 main sections: Microbial, Metals, Pesticides, and Solvents. Each section lists various substances and their test results (PASS, FAIL, etc.) against specific limits.

INSTRUMENTS
potency: HPLC (LC2030C-UV)
terpenes: GCMS (QP2020/HS20)
solvents: GCMS (QP2020/HS20)
pesticides: LCMSMS (LC8060)
mycotoxins: LCMSMS (LC8060)
microbial: qPCR (AriaMx) and plating
metals: ICPMS (ICPMS-2030)

SECURITY FEATURE: WATERMARK MUST MATCH CERTIFICATE ID AND ISSUE DATE

Certified by:

Justin M Johnston
Deputy Director

Stillwater Laboratories Inc.
MT License L00001, 7, 8
6073 US93N Suite 5
Olney MT 59927
406-881-2019

The data in this report is the property of and is administered by Stillwater Labs. The format, layout, and security features of this report are copyrighted by Stillwater Laboratories Inc. © 2020



Printed 3/2/2021 1:09 PM

https://portal.a2la.org/scopepdf/4961-01.pdf

**OTL900**

Batch ID or Lot Number: <b>21231A</b>	Test: <b>Microbial Contaminants</b>	Reported: <b>8/26/21</b>	
Matrix: Finished Product	Test ID: T000158961	Started: 8/23/21	USDA License: N/A
Status: N/A	Methods: TM25 (qPCR) TM24, TM26, TM27(Culture Plating): Microbial (Colorado Panel)	Received: 08/20/2021 @ 01:34 PM	Sampler ID: N/A

**MICROBIAL CONTAMINANTS DETERMINATION**

Contaminant	Method	LOD	LLOQ	ULOQ	Result	Notes
<b>Total Aerobic Count*</b>	TM-26, Culture Plating	10 <sup>2</sup> CFU/g	10 <sup>3</sup> CFU/g	1.5x10 <sup>5</sup> CFU/g	None Detected	Free from visual mold, mildew, and foreign matter
<b>Total Coliforms*</b>	TM-27, Culture Plating	10 <sup>2</sup> CFU/g	10 <sup>2</sup> CFU/g	1.5x10 <sup>4</sup> CFU/g	None Detected	
<b>Total Yeast and Mold*</b>	TM-24, Culture Plating	10 <sup>2</sup> CFU/g	10 <sup>2</sup> CFU/g	1.5x10 <sup>4</sup> CFU/g	None Detected	
<b>E. coli (STEC)</b>	TM-25, PCR	1 CFU/25 g	NA	NA	Absent	
<b>Salmonella</b>	TM-25, PCR	1 CFU/25 g	NA	NA	Absent	

*Brianne Maillot*  
 Brianne Maillot  
 8/26/2021  
 11:08:00 AM

*Jackson Osaghae-Nosa*  
 Jackson Osaghae-Nosa  
 8/26/2021  
 5:16:00 PM

PREPARED BY / DATE

APPROVED BY / DATE

**Definitions**

LOD = Limit of Detection | LLOQ = Lower Limit of Quantitation | ULOQ = Upper Limit of Quantitation

 CFU/g = Colony Forming Units per Gram | STEC = Shiga Toxin-Producing *E. coli*

\* Values recorded in scientific notation, a common microbial practice of expressing numbers that are too large to be conveniently written in decimal form.

Examples:  
 10<sup>2</sup> = 100 CFU  
 10<sup>3</sup> = 1,000 CFU  
 10<sup>4</sup> = 10,000 CFU  
 10<sup>5</sup> = 100,000 CFU

Testing results are based solely upon the sample submitted to Botanacor Laboratories, LLC, in the condition it was received. Botanacor Laboratories, LLC warrants that all analytical work is conducted professionally in accordance with all applicable standard laboratory practices using validated methods. Data was generated using an unbroken chain of comparison to NIST traceable Reference Standards and Certified Reference Materials. This report may not be reproduced, except in full, without the written approval of Botanacor Laboratories, LLC.



CDPHE Certified



Certificate #4329.02